

## Launch X431 iDiag for IPAD iPhone IOS V8.0 user manual

---

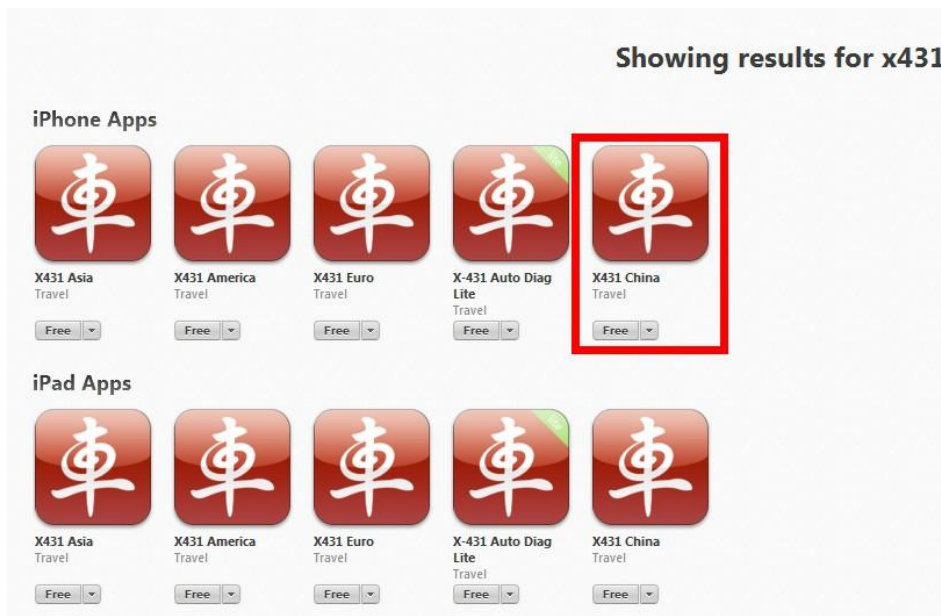
### X431 Auto Diag iOS requirements:

X431 Auto Diag works with iPhone / iPad/ iPod touch with IOS 8.0 or above IOS 8.0

### Steps:

**Step one:** Install X431 IDiag software on iPhone.

Firstly, open Appstore on your iPhone, search X431, in the search result click one area to install, for example X431 china.



**Step two: connect X431 IDiag diagnostic connector with car and iPhone/ iPad/ iPod touch**

- a. connect X431 IDiag diagnostic connector with car  
Plug DBscar interface near the steering wheel as the following picture shows.  
Open X431 IDiag , turn on the ignition of the car.



B, connect X431 IDiag diagnostic connector with iPhone/ iPad/ iPod touch

Open the Bluetooth of iPhone to search the device, the name of device Bluetooth is **diagnostic connector** serial number; to match Bluetooth does not need password.

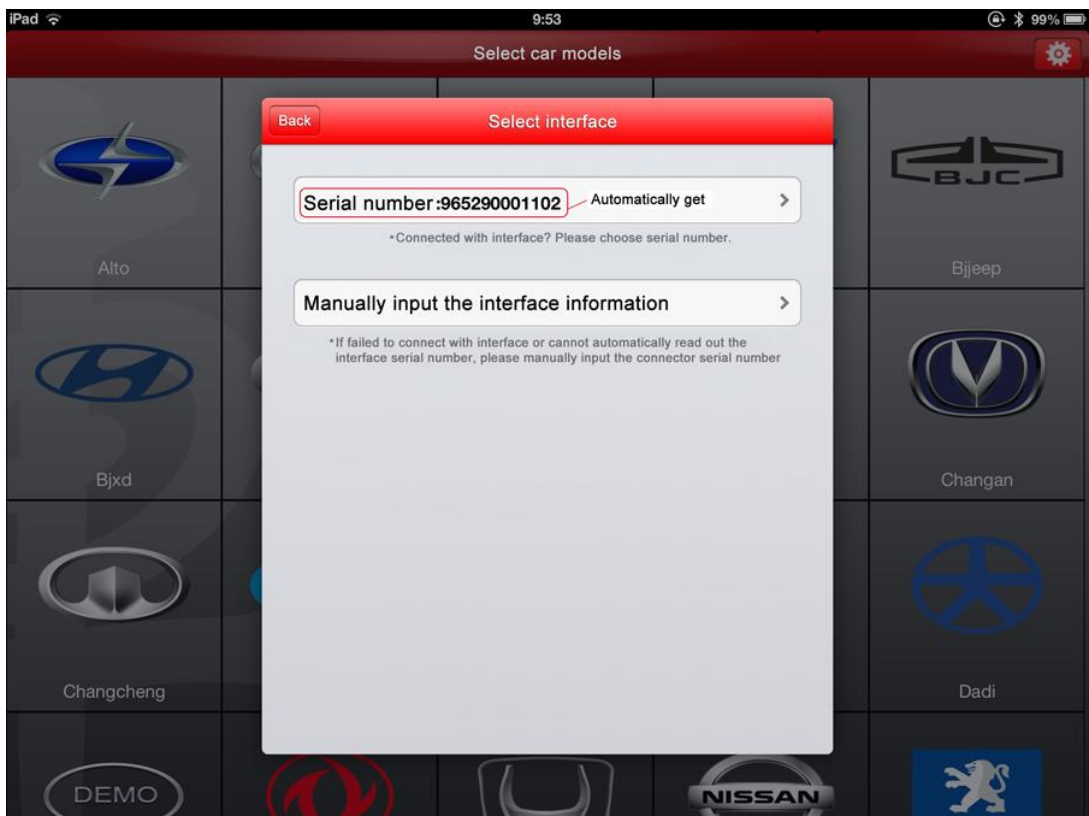
**Step three: register CC number**

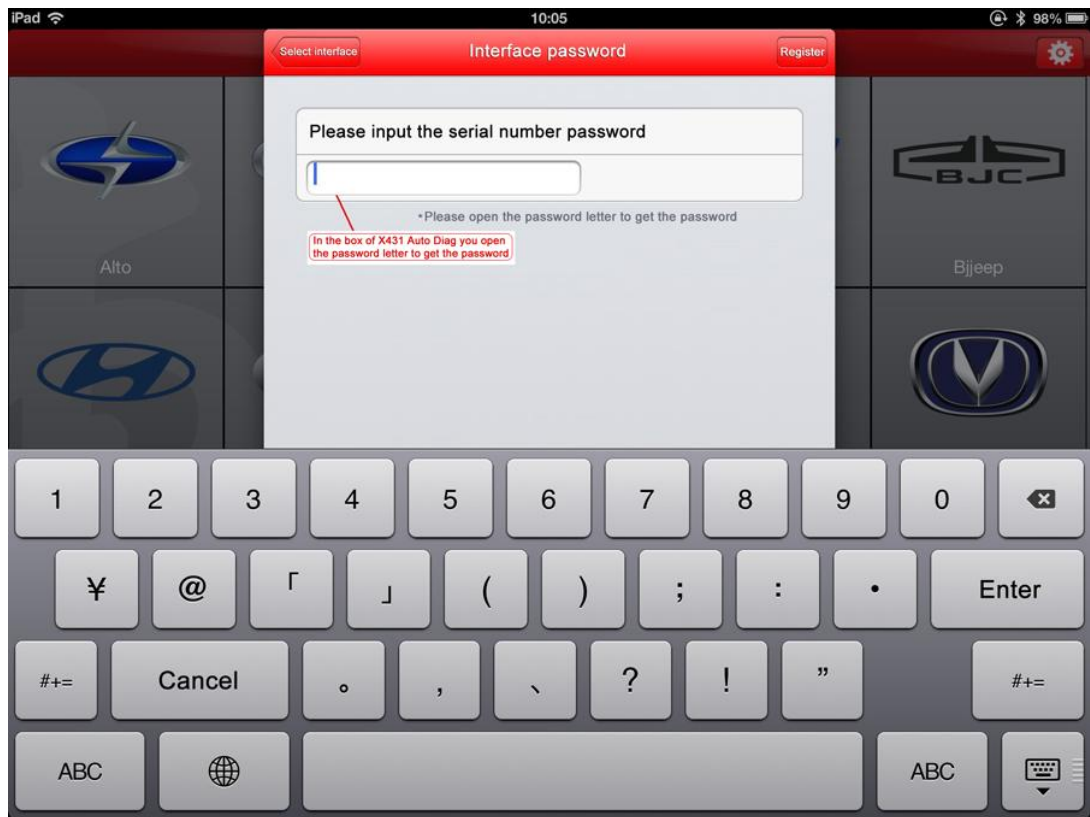
After connect well the diagnostic connector, open the diagnostic software installed in your iPhone (iPad iPod touch), click "settings" on the upper right corner to enter and register CC number, note: you could enter your email address as your user name, also you could register at <http://www.dbscar.com/>



#### Step four: connector registration

After login, click "connector registration" in the "settings", (register X431 IDiag diagnostic connector into CC account). The diagnostic connector serial number will automatically get, if not, please exist the software and enter again or manually input the connector serial number ( the SN is marked on the DBScar connector). Click serial number and in the box of X431 IDiag you open the password letter to get the password. Finish registration as the following pictures shows.





**Step five: Pay the software (you are allowed to pay on the PC)**

After finish registering x431 IDiag, please click "get the software" (browse <http://www.dbscar.com/>), log in with the CC number and password, then go to the page for ordering the software, select the software according to the car model, you are available to buy multiple software as you want.



## LAUNCH User center

[Back to homepage](#)



*Welcome to log in*

Login name:

Password:

Remember login [Forget password?](#)

[Log in](#)

No CC passport? [Register now](#)

mycar.dbscar.com/mycar/pad/order/buyOrderCenter.action?pageNo=2

Launch\_DBSCar cas.dbscar.com/login?service=ht... Launch\_DBSCar Launch\_DBSCar

Homepage Products News center Service User center BBS About us

### Shopping center

Homepage -> User center -> Shopping center

Product serial number:  (Note: after you alternate the product, the shopping cart is null) [Pay](#) [My shopping cart](#)

<input type="checkbox"/>	Software name	Software version	Update time	Price	Operation
<input type="checkbox"/>	三菱	29.61	2013-01-26 10:21:52	20(RMB)	<a href="#">Check</a>
<input type="checkbox"/>	上海华普	14.00	2013-01-31 17:14:54	20(RMB)	<a href="#">Check</a>
<input type="checkbox"/>	上海赛宝	10.07	2013-01-31 17:24:56	20(RMB)	<a href="#">Check</a>
<input type="checkbox"/>	东南汽车	20.10	2013-01-31 16:53:27	20(RMB)	<a href="#">Check</a>
<input type="checkbox"/>	东风CNG	10.06	2013-01-31 16:50:41	20(RMB)	<a href="#">Check</a>
<input type="checkbox"/>	东风小康	13.20	2013-01-31 16:52:54	20(RMB)	<a href="#">Check</a>
<input type="checkbox"/>	东风悦达	20.20	2013-01-31 17:38:55	20(RMB)	<a href="#">Check</a>
<input checked="" type="checkbox"/>	东风日产	15.02	2013-01-31 16:51:32	20(RMB)	<a href="#">Check</a>
<input type="checkbox"/>	东风标致	17.36	2013-01-31 16:52:09	20(RMB)	<a href="#">Check</a>
<input type="checkbox"/>	东风雪铁龙	18.52	2013-01-31 17:02:51	20(RMB)	<a href="#">Check</a>

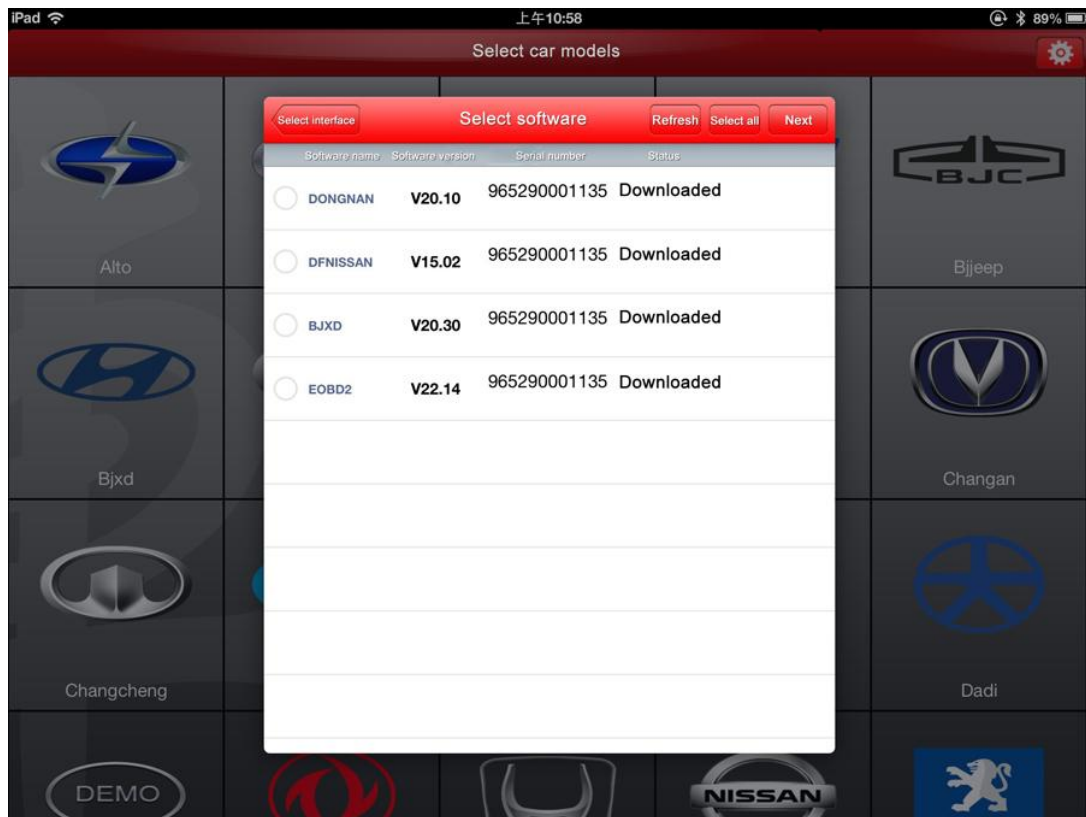
111 records in total Page 2 of 12 1 [2] 3 4 5 6 7 ... 12 Turn to page  [GO](#)

**Navigation menu**

- Shopping center
- Update center
- Order info
- Download center
- Products
- User info
- Product registration
- User info maintenance

## Step 6, Download the software

Click the diagnostic software to download, download the paid software and the free software (The OBDII software is free of charge).



**Step 7, you are ready to use Launch IDIag to diagnose car models**

Back to the page of car models selection, click the car model icon you paid. You are ready to diagnose. The following pictures show how deal with the southeastern cars.

**Note: when the PLC program releases the newest version, the terminal will give priority to the update of the PLC program.**



