

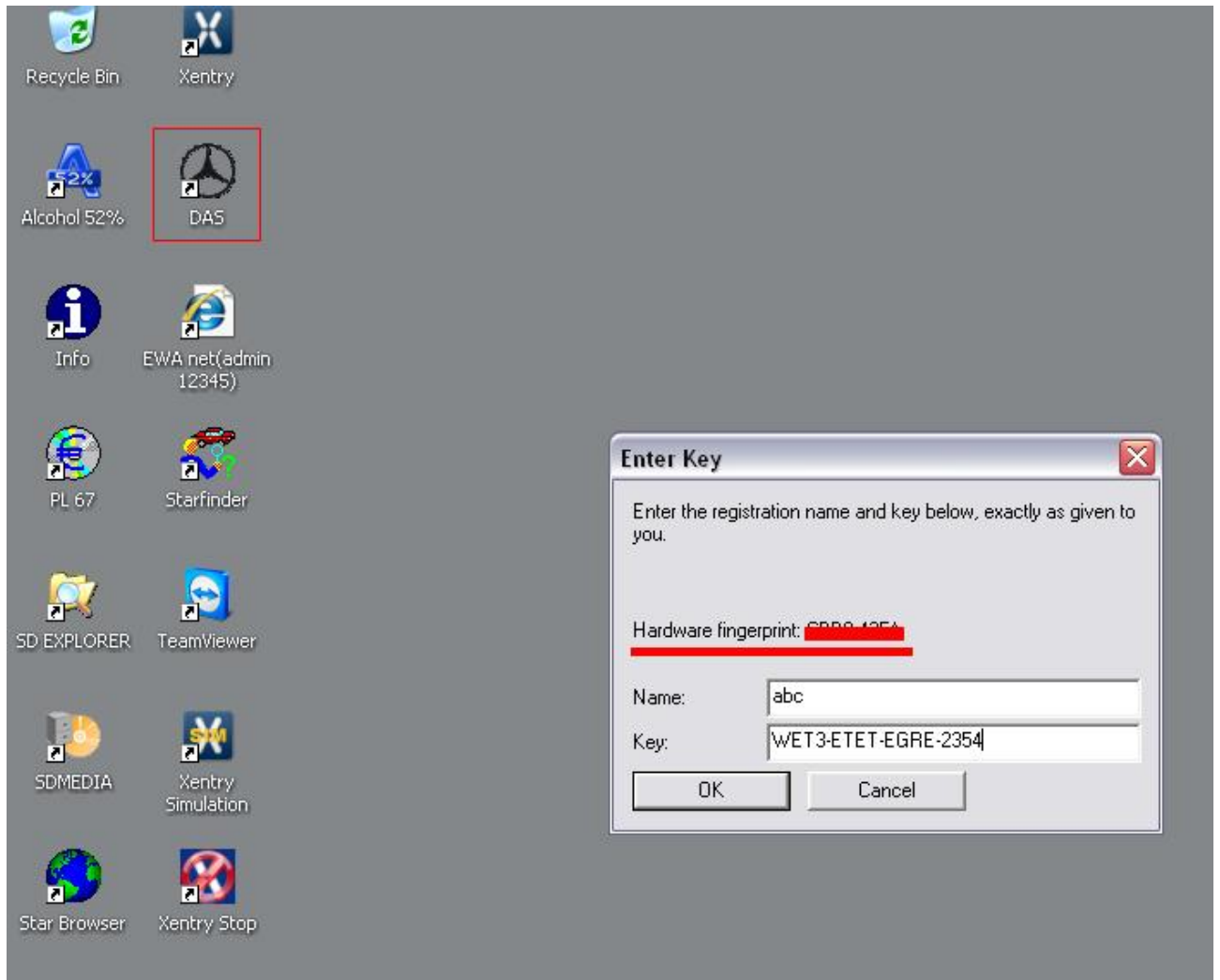
Send to us this

Hardware fingerprint:XXXX-XXXX

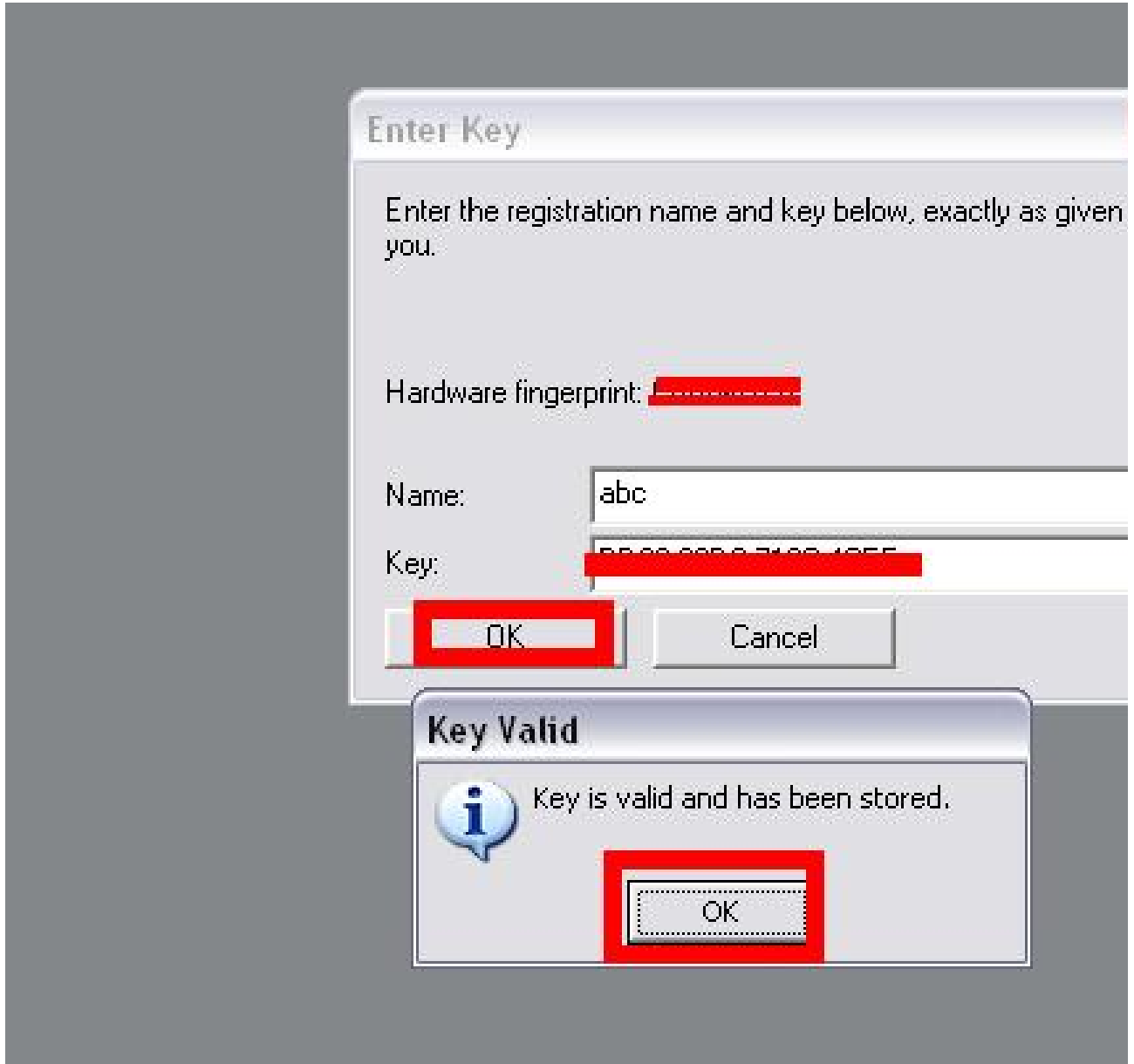
LAN-ID XXXXXXXXXXXXX

HW-ID XXXXXXXXXXXX APPID XXX

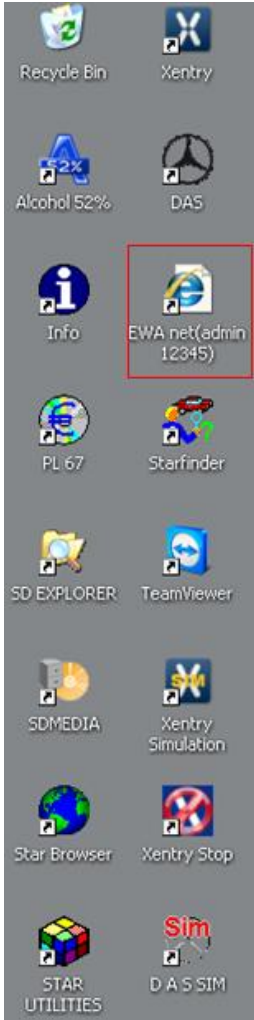
DAS



Hardware fingerprint:XXXX-XXXX



EPC WIS



EWA login - Windows Internet Explorer  
http://localhost:9000/EWA-net/Login/trySSO.do

Mercedes-Benz EPC, WIS/ASRA

**System check**

- ✓ Supported version of Java Webstart found.
- ✓ Supported version of Internet Explorer found.
- ✓ Supported version of Windows found.

EPC, WIS/ASRA is completely supported. Additional functionalities are available under Download.

User:

Password:


Server: STAR4371 (127.0.0.1)

Server - Windows Internet Explorer

http://localhost:9000/EWA-net/Admin/servermanagement.do;jsessionid=A3B0ADA813F52F0A89C8

Mercedes-Benz EPC, WIS

One of the server access authorizations is invalid. Please check the access authorizations.

 Programs

- ▼ My profile
  - ▶ Basic preferences
  - ▶ Advanced preferences
  - ▶ Received messages
  - ▶ Sent messages
- ▼ Administration
  - ▶ **Server**
  - ▶ Workshop
  - ▶ Group
  - ▶ User

### Server

- ▶ **Edit the access authorization**
- ▶ Show management console
- ▶ Back up and restore user database
- ▶ Import users, groups, workshops
- ▶ Manage parts price list
- ▶ Manage notes that are no longer referenced
- ▶ Display EPC statistics

Recycle Bin    Xentry

Alcohol 52%    DAS

Info    EWA net(admin 12345)

PL 67    Starfinder

SD EXPLORER    TeamViewer

SDMEDIA    Xentry Simulation

Star Browser    Xentry Stop

STAR UTILITIES    D A S SIM

**Edit the access authorization - Windows Internet Explorer**

http://localhost:9000/EWA-net/Admin/serverlicense.do;jsessionid=A3B0ADA813F52F0A89C893C769

Mercedes-Benz

**One of the server access authorizations is invalid. Please check the access authorizations.**

**Server**

**Edit the access authorization**

Current MAC address (LAN-ID): **A2D29A0330E**

EPC:

StartKey:

Valid:

WIS/ASRA:

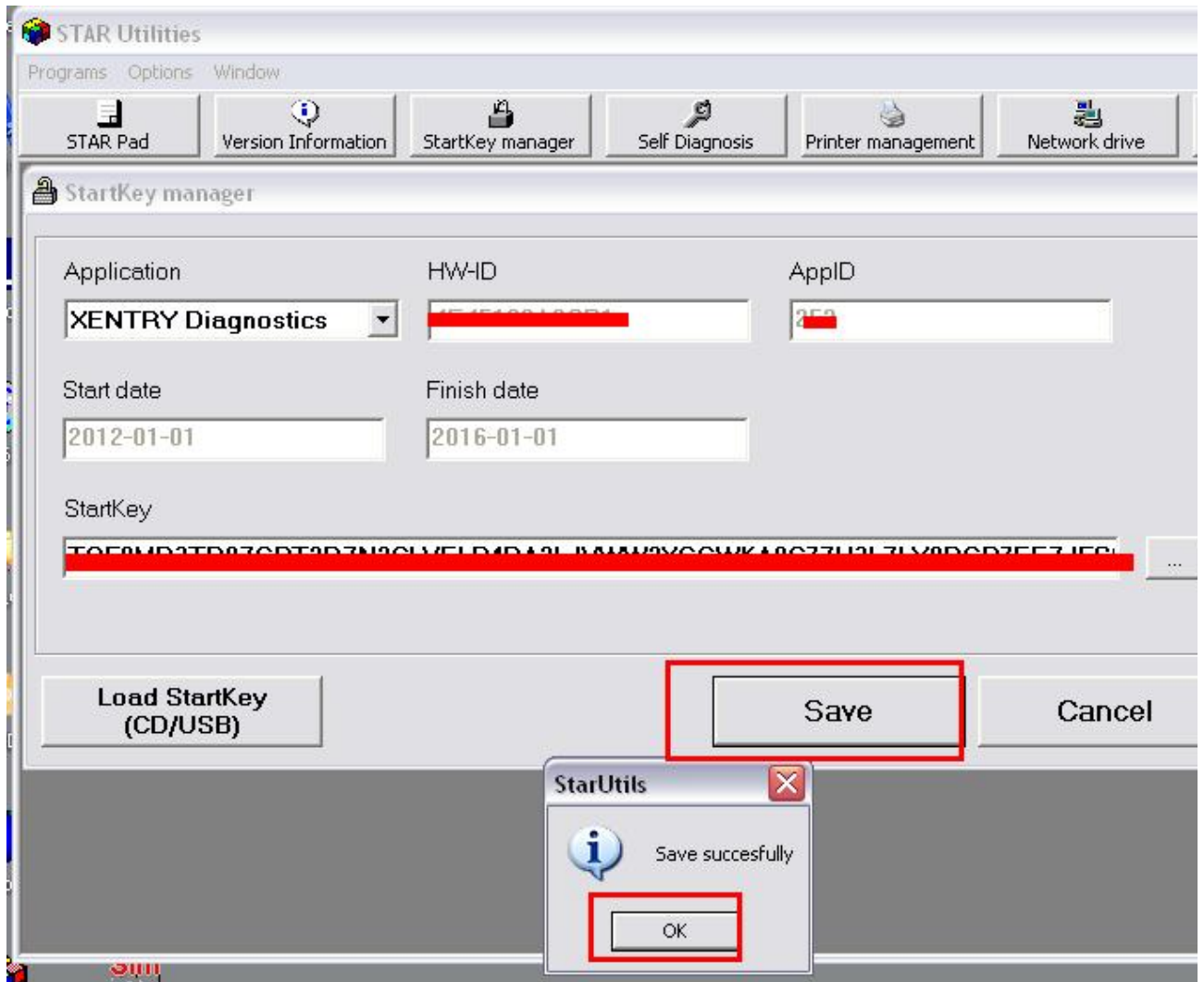
StartKey:

Valid:

Welcome: admin | Server: STAR4371 (127.0.0.1) | E







HW-ID XXXXXXXXXXXX APPID XXX