

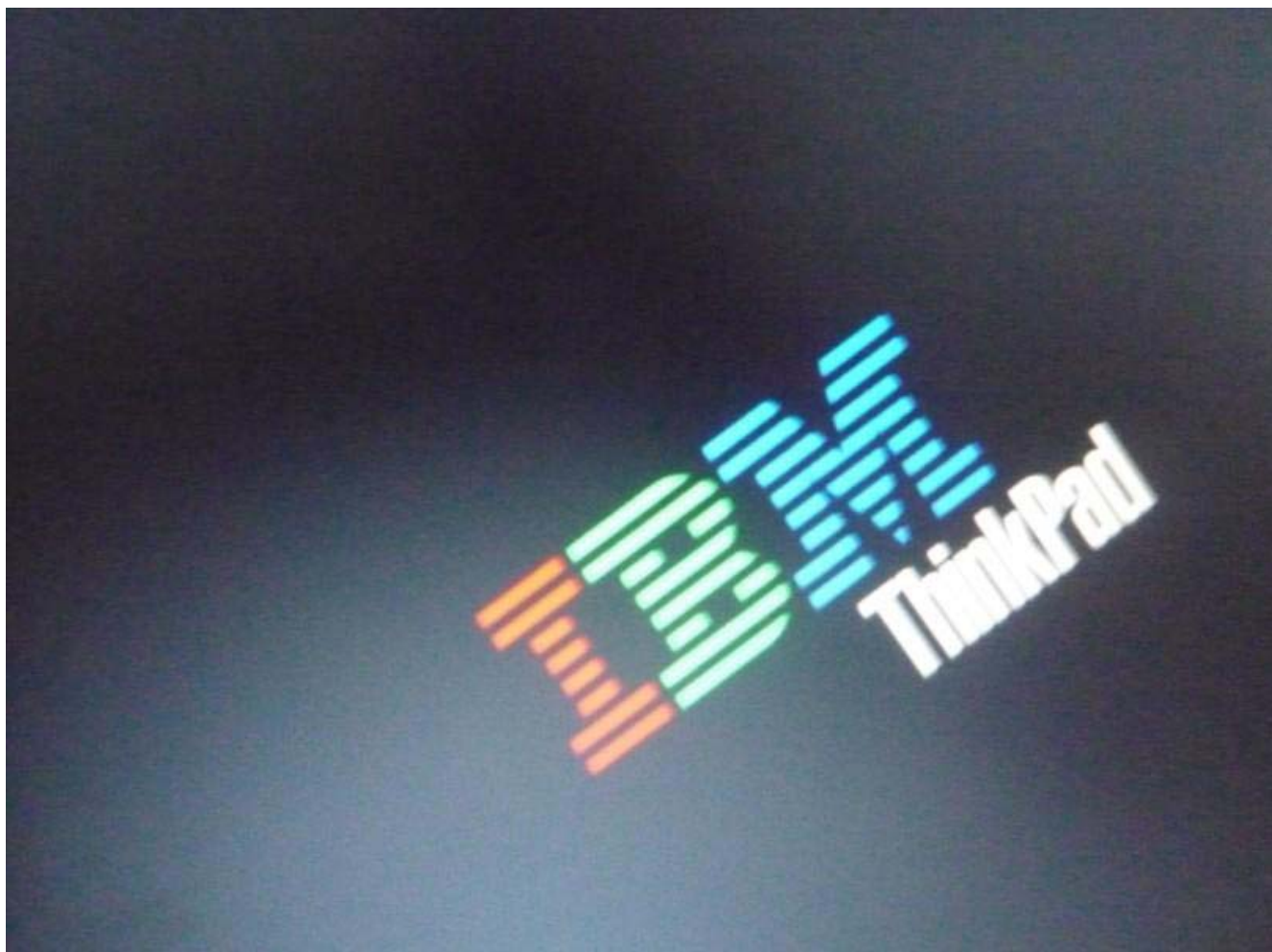
Installation guide for BMW OPS (GT1, OPPS) T30 version DIS V57 SSS V39

In the following parts, you will know “how to enter V57” and “how to enter SSS v39”.

Part one: How to enter DIS V57?

Step 1, put T30 hard disk into IBM T30 laptop.

Step 2, Start the computer and wait for 2 seconds **(do not press any button, just wait)**.



Mark

F1.*BMW DIS V57

F2. BMW SSS V39

ESC stops 10sec timer

ENTER boots default

F-keys boot OS

[98765432_]

ESC stops 10sec timer

ENTER boots default

F-keys boot OS

[9876543210]

SCO OpenServer(TM) Release 5

bootsnb: Init snb interface @ UniSoft GmbH 2002

86=(AH) SMBus Installation check: error

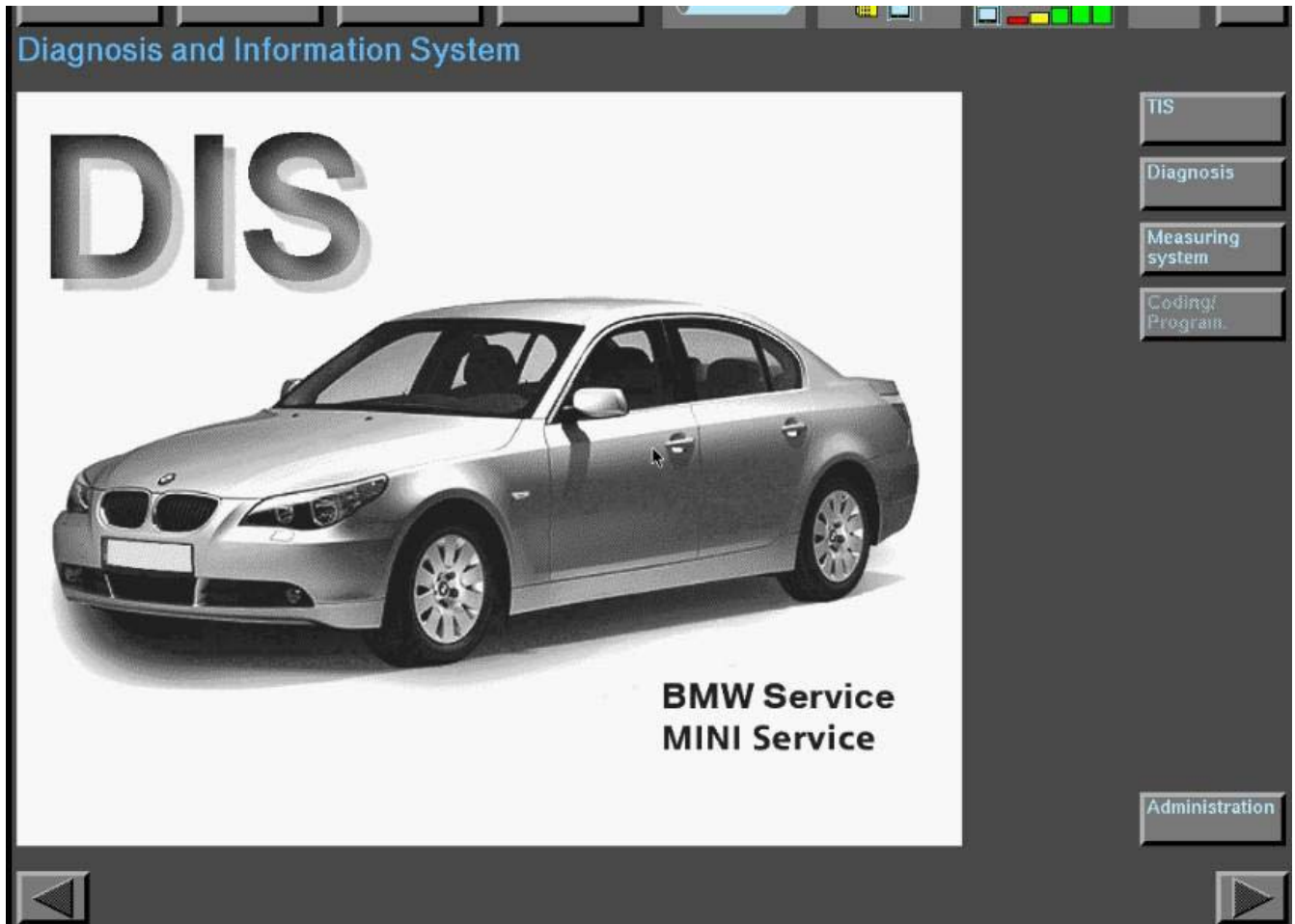
Boot

:

hd(40)unix snb.enabled=1 swap=hd(41) dump=hd(41)

Sizing memory

.....
.....
.....
.....
.....



Until this screen appears- it means it completely finishes the start of software and begins to diagnose car)

Part two: how to Start SSS V39 coding software

Step 1, Star computer and open software

The first screen appears as following shows



Step two, when the second screen appears, press **“F2”** button on the laptop (wait about 2 seconds)

```
Mark
F1.*BMW DIS V57
F2. BMW SSS V39

ESC stops 10sec timer
ENTER boots default
F-keys boot OS
[9876      ]
```

Step 3, the computer will go to SSSV39



This is SSS V39 Version information

SSS overview (total: 1)				
Operating status	Sessions current/max.	Version Progman	SSS name	IP address
usable	0 / 5	39.0.0	SSSV39	192.168.68.50

This is SSS39 language options

deutsch	english(uk)	français	italiano	español	nederlands
svenska	japanese 日本語	english(usa)	thai ไทย	taiwanese 台語	chinese 汉语
korean 한국어	bahasa indonesia	russian русский	greek Ελληνικά	türkçe	português